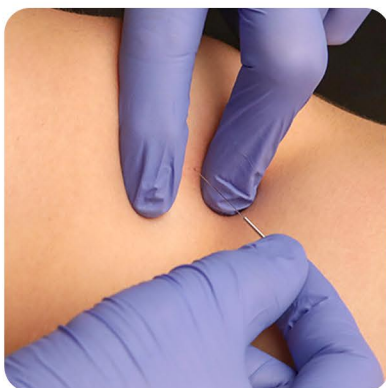


# Dry Needling for Pelvic Pain — Overland Park, KS



## Industry Leading Dry Needling

Hosted By



SCAN ME

### Dry Needling for Pelvic Pain: Where Pelvic Health Meets Advanced Dry Needling

The only dry needling course built specifically for pelvic health clinicians — integrating pain science, internal palpation, and trigger point techniques for the muscles you treat most.

#### Top 3 Takeaways:

**Master the Full Pelvic Region:** Safely needle internal and external pelvic floor muscles, including the levator ani, obturator internus, and urogenital triangle.

**Integrate Pain Science:** Apply the latest research in central sensitization and clinical reasoning to know exactly when and where to needle.

**Built for Pelvic Health Clinicians:** Designed around the muscles you already treat — adding dry needling to your existing skillset with confidence.

#### Date & Location

🕒 Jan 15, 2027 - Jan 17, 2027

📍 6701 W. 121st St. Ste. 300, Overland Park, KS 66209

✉ Email: [info@myopainseminars.com](mailto:info@myopainseminars.com)

☎ Call: (240) 396 - 6946

🌐 Web: [myopainseminars.com](http://myopainseminars.com)